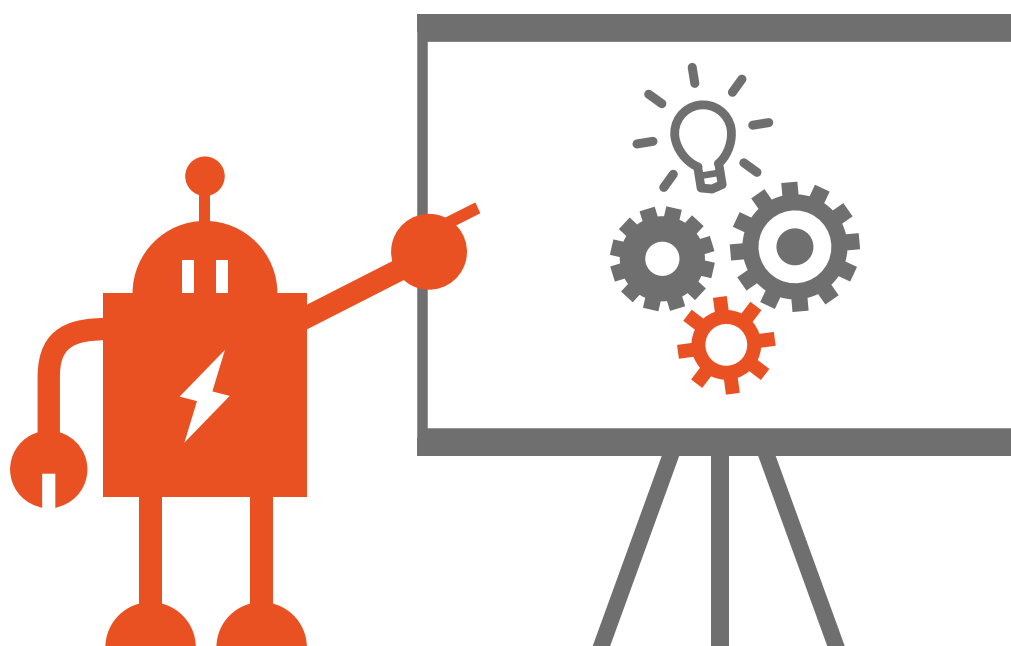


# Catalogue of training programs

## Education Center



The KUBOUŠEK group draws on many years of experience in the industry. That is why it can offer you a custom solution for a new process or optimization of an existing production process, training, service and timely delivery of spare parts. Thanks to our professional customer-focused approach you save your time, operating costs, and get the jump on your competitors.

With the opening of the new Technology Center and Education Center in 2017, the range of offered courses has been expanded substantially across all areas of our equipment and services. So you have a unique opportunity to inspire and extend your know-how about new technologies that increase the potential of your production within the Industry 4.0 concept.



“Our goal is the success of our partners. That’s why we offer a whole range of training programs during which we can pass on our long-term experience in the field to help you to maximize performance with minimal manufacturing costs.

I am pleased that by opening the new Technology Center and Education Center in 2017, we can offer our customers training in high-end technologies unique in Europe.”

**Dipl. Ing. Ivan Kuboušek**

President of the parent company KUBOUŠEK EU holding a.s.

## Technologies

Our expert trainers are highly experienced and use the latest technology as to provide the highest standard of training. The training consists of a theoretical part and intensive practical training on our machines and robots.

## Efficiency

As a standard, the training courses take place in our Education Center in České Budějovice using our machines and robots. In addition, the training can be organized directly at the customer, provided a machine/robot is available for this purpose.

We offer courses for all levels of expertise. We can also prepare a tailored course according to your wishes and requirements.

## Individual approach

In delivering the training, we reflect individual needs of our customers. The number of course participants is normally limited to five to eight persons. With this approach, our trainers can reflect specific needs of every trainee.

## Your benefits:

- Technology Center
- experienced trainers
- small number of trainees
- intensive practical training on the machine/robot
- individual approach, time to questions and problem solving



### We appreciate our steady customers

The customer who orders 5-9 courses per year, is granted **10 % discount**, from 10 courses a year, a **20 % discount**.

## KraussMaffei – machines

### Control system MC3F, MC4, MC5, MC6

Basic operation and maintenance training course .....	8
Extension operation and maintenance training course.....	8
Special training course for setters and technologists .....	9
Special training course for electrical maintenance personnel .....	9
Special hydraulic and mechanical maintenance training course .....	10

## KraussMaffei – PX machines

### Control system MC6

Basic operation and maintenance training course .....	11
Extension operation and maintenance training course.....	11
Special training course for setters and technologists .....	12

## Basic technological training

Basic training course .....	13
-----------------------------	----

## KraussMaffei – robots

### Control system LRX, MC5, MC6

Basic training course .....	14
Basic programming course .....	14

## Sepro – robots

### Control system S900II, Visual 1, Visual 2, Visual 3

Basic operation and maintenance training course .....	15
Special maintenance training course.....	15
Basic operation and maintenance of 6X training course.....	16
Basic programming course .....	16
Advanced programming course .....	17

## Individual training course

Optional level .....	17
----------------------	----

## KOCH-Technik

### Basic training course for operation and maintenance personnel

Scope A: Plastic granulate drying .....	18
Scope B: Vacuum conveying of plastic granulate .....	18
Scope C: Volumetric dosing system .....	19
Scope D: Gravimetric dosing system .....	19

### Advanced training courses for operation and maintenance personnel

Scope A: Plastic granulate drying.....	20
Scope B: Vacuum conveying of plastic granulate .....	20
Scope C: Volumetric dosing system .....	21
Scope D: Gravimetric dosing system .....	21

## REGLOPLAS

Basic training course for the operation and maintenance of peripheral equipment REGLOPLAS .....22

## ONI RHYTEMPER

Special training course for the operation and maintenance of the pulse temperature control system – ONI RHYTEMPER.....22

## SESOTEC

Basic training course for the operation and maintenance of peripheral equipment SESOTEC.....23

## Mitutoyo – CMMs

Basic training course for operators - SW MCOSMOS .....24

Basic training course for operators - SW options MCOSMOS – CAT 1000 P/S .....24

Advanced programming course - SW MCOSMOS .....25

Comprehensive course for operators - SW MSURF – non-contact line laser .....25

Comprehensive course for operators - SW option GEARPAK – geared wheels .....26

## Mitutoyo - contour, roughness and roundness measuring instruments

Comprehensive course for operation personnel - contour measuring instrument - SW FORMTRACÉPAK .....26

Comprehensive course for operation personnel - contour measuring instrument combined with roughness measuring instrument - SW FORMTRACÉPAK.....27

Comprehensive course for operation personnel - roughness measuring instrument – SJ 2xx, 3xx, 4xx – workshop.....28

Comprehensive course for operation personnel - roughness measuring instrument – SJ 2xxx,5xxx - SW SURFPAK – laboratory .....28

Comprehensive course for operation personnel - roundness measuring instruments - SW ROUNDPAK – workshop and laboratory .....29

## Mitutoyo – QUICKSCOPE and QUICKVISION

Comprehensive course for operation personnel – QUICKSCOPE - SW QSPAK – manual and CNC – 2D 3D

Comprehensive course for operation personnel – QUICKVISION - SW QVPAK – 3D .....30

## VICIVISION and METRIOS

Comprehensive course for operation personnel – MTL VICIVISION - SW MTL.....31

Comprehensive course for operation personnel – METRIOS - SW METRIOS .....32

## Metrology

Fundamentals of metrology - basic course .....33

Metrology in practice - advanced course .....33

## Quality management

Introduction to quality management - basic course .....34

Quality management (ISO 9001:2016) - extension course.....34

<b>KraussMaffei</b> Machines	Basic		Extension		Special		Special		Special	
	KM B1		KM E1		KM ST		KM SE		KM SH	
	Operation and maintenance MC3F/MC4/MC5/MC6		Operation and maintenance MC3F/MC4/MC5/MC6		For setters and technologists MC3F/MC4/MC5/MC6		Electrical maintenance MC3F/MC4/MC5/MC6		Hydraulic and mechanical maintenance MC3F/MC4/MC5/MC6	
	3 days	Page 8	2 days	Page 8	3 days	Page 9	3 days	Page 9	3 days	Page 10

<b>KraussMaffei</b> PX machines	Basic		Extension		Special		Basic technological training	Basic	
	KM B1 - PX		KM E1 - PX		KM ST - PX			TECH 1	
	Operation and maintenance MC6		Operation and maintenance MC6		For setters and technologists MC6				
	3 days	Page 11	2 days	Page 11	3 days	Page 12		2 days	Page 13

<b>KraussMaffei</b> Robots Programming	Basic			
	KM B1 LRX		KM P1 LRX	
	KraussMaffei robots LRX MC5/MC6		Programming robots LRX MC5/MC6	
	2 days	Page 14	3 days	Page 14

<b>Sepro</b> Robots Programming	Basic		Advanced		Special	
	S B1		S B1 6x		S P1	
	Operation and maintenance of robots S900II/Visual 1/ Visual 2/Visual 3		Operation and maintenance of 6X robots Visual 3		Programming robots S900II/Visual 1/ Visual 2/Visual 3	
	2 days	Page 15	2 days	Page 16	3 days	Page 17
					SP 2	
					Programming robots S900II/Visual 1/ Visual 2/Visual 3	
					3 days	
					S S1	
					Maintenance of robots S900II/Visual 1/ Visual 2/Visual 3	
					2 days	
					Page 15	

<b>KOCH-Technik</b>	Basic			
	KOCH SPG 1		KOCH PDG 1	
	Plastic granulate drying		Vacuum conveying of plastic granulate	
	2 hours	Page 18	2 hours	Page 18
			KOCH VDG 1	
			Volumetric dosing system	
			2 hours	
			Page 19	
			KOCH GDG 1	
			Gravimetric dosing system	
			2 hours	
			Page 19	
	Advanced			
	KOCH SPG 2		KOCH PDG 2	
	Plastic granulate drying		Vacuum conveying of plastic granulate	
	4 hours	Page 20	4 hours	Page 20
			KOCH VDG 2	
			Volumetric dosing system	
			4 hours	
			Page 21	
			KOCH GDG 2	
			Gravimetric dosing system	
			4 hours	
			Page 21	

<b>REGLOPLAS</b> <b>ONI RHYTEMPER</b> <b>SESOTEC</b>	Basic		Special	
	<b>RGP 1</b> Operation and maintenance of REGLOPLAS Temperature control units 1 day Page 22	<b>SES 1</b> Operation and maintenance of SESOTEC Metal detectors and separators 1 day Page 23	<b>ONI RHY 1</b> Operation and maintenance of ONI RHYTEMPER Pulse temp. control system 2 days Page 22	

<b>Mitutoyo</b> <b>CMM</b>	Basic		Advanced		Comprehensive	
	<b>MT 1</b> Operation of CMMs SW MCOSMOS 2 days Page 24	<b>MT 2</b> Operation of CMMs SW MCOSMOS - CAT 1000 P/S 1 day Page 24	<b>MT 3</b> Operation of CMMs SW MCOSMOS 1 day Page 25	<b>MT 4</b> Operation of CMMs SW MSURF 3 days Page 25	<b>MT 5</b> Operation of CMMs SW GEARPAK 3 days Page 26	

<b>Mitutoyo</b> Contour, roughness and roundness measuring instruments	Comprehensive			
	<b>MT 6</b> Operation of contour measuring instrument SW FORMTRACEPAK 2 days Page 26	<b>MT 7</b> Operation of contour measuring instr. combined with roughness measuring inst. SW FORMTRACEPAK 3 days Page 27	<b>MT 8</b> Operation of workshop roughness measuring instrument Instrument interface - built-in processor 1 day Page 28	<b>MT 9</b> Operation of laboratory roughness measuring instrument SW SURFPAK 1 day Page 28

<b>Mitutoyo</b> <b>QUICKSCOPE</b> <b>QUICKVISION</b>	Comprehensive	
	<b>MT 11</b> Operation of QUICKSCOPE SW QSPAK 2 days Page 30	<b>MT 12</b> Operation of QUICKVISION SW QVPAK 2 days Page 30

<b>VICIVISION</b> <b>METRIOS</b>	Comprehensive	
	<b>MT 13</b> Operation of machines MTL VICIVISION SW MTL 2 days Page 31	<b>MT 14</b> Operation of machines METRIOS SW METRIOS 2 days Page 32

<b>METROLOGY</b> <b>QUALITY</b> <b>MANAGEMENT</b>	Basic		Advanced		Extension	
	<b>MET 01</b> Fundamentals of metrology 6 hours Page 33	<b>QM 01</b> Introduction to quality management 4 hours Page 34	<b>MET 02</b> Metrology in practice 1 day Page 33	<b>QM 02</b> Quality management (ISO 9001:2016) 1 day Page 34		

# Operation and maintenance of KraussMaffei injection molding machines

Control system: MC3F/MC4/MC5/MC6  
Level – Basic course

Training course code: **KM B1**

## Training objective

- Optimum setup and control of the machine including quick and professional troubleshooting of minor problems that may occur during machine operation.

## Topics

- Basic setup and control of the machine
- Identification and correction of minor defects of mechanical and electrical components of the machine
- Identification and correction of basic problems in the machine setup
- Machine maintenance



This training course is composed of a theoretical and a practical part. Training materials are provided for the theoretical part. The KM80/380CX machine is available and used for the practical training at KUBOUŠEK s.r.o. If the training is required directly at the customer, a machine must be available for this purpose.

**Number of trainees:** 5 persons maximum  
**Course duration:** 3 days, from 8 am to 4 pm

**Preconditions:**  
No special knowledge is required.

# Operation and maintenance of KraussMaffei injection molding machines

Control system: MC3F/MC4/MC5/MC6  
Level – Extension course

Training course code: **KM E1**

## Training objective

- Optimum setup and control of the machine including quick and professional troubleshooting of minor problems that may occur during machine operation.

## Topics

- Basic setup and control of the machine
- Identification and correction of minor defects of mechanical and electrical components of the machine
- Identification and correction of basic problems in the machine setup
- Maintenance of the machine
- Core setting
- Core programming
- Graph setting
- Quality inspection

This training includes both theoretical and practical parts. Training materials are provided for the theoretical part. The KM80/380CX machine is available and used for the practical training at KUBOUŠEK s.r.o. If the training is required directly at the customer, a machine must be available for this purpose.

**Number of trainees:** 5 persons maximum  
**Course duration:** 2 days, from 8 am to 4 pm

**Preconditions:**  
Knowledge is required on the level of the training course KM B1 for the relevant control system.



# Training course for setters and technologists working on KraussMaffei machines

Control system: MC3F/MC4/MC5/MC6  
Level – Special course

Training course code: **KM ST**

## Training objective

- Optimum setup and control of the machine including quick and professional troubleshooting of minor problems that may occur during machine operation.

## Topics

- Basic setup and control of the machine
- Special setup and control of the machine
- Identification and correction of machine setup problems related to the machine functions and technological setup
- Cycle parameter monitoring setup
- SPC
- Standard quality monitoring setup
- Practical setup and use of the graphic packet



This training includes both theoretical and practical parts. Training materials are provided for the theoretical part. The KM80/380CX machine is available and used for the practical training at KUBOUŠEK s.r.o. If the training is required directly at the customer, a machine must be available for this purpose.

**Number of trainees:** 5 persons maximum  
**Course duration:** 3 days, from 8 am to 4 pm

**Preconditions:**  
Knowledge is required on the level of the training course KM B1 for the relevant control system.

# Maintenance of KraussMaffei machine electric installations

Control system: MC3F/MC4/MC5/MC6  
Level – Special course

Training course code: **KM SE**

## Training objective

- Optimum setup and control of the machine including quick and professional troubleshooting of minor problems that may occur during machine operation.

## Topics

- Basic setup and control of the machine
- Identification and correction of faults of electric and electronic components of the machine
- Identification and correction of basic machine setup problems in connection with the machine functions
- Machine maintenance
- Reading in wiring diagrams
- Reading the spare parts catalogue
- MC3F, MC4, MC5 or MC6 control principle
- Functions of individual MC3F, MC4, MC5 or MC6 control cards

This training includes both theoretical and practical parts. Training materials are provided for the theoretical part. The KM80/380CX machine is available and used for the practical training at KUBOUŠEK s.r.o. If the training is required directly at the customer, a machine must be available for this purpose.

**Number of trainees:** 5 persons maximum  
**Course duration:** 3 days, from 8 am to 4 pm

**Preconditions:**  
Knowledge is required on the level of the training course KM B1 for the relevant control system.

# Hydraulic and mechanical maintenance of KraussMaffei machines

Control system: MC3F/MC4/MC5/MC6  
Level – Special course

Training course code: **KM SH**

## Training objective

- Optimum setup and control of the machine including quick and professional troubleshooting of minor problems that may occur during machine operation.

## Topics

- Basic setup and control of the machine
- Identification and correction of defects of machine hydraulic and mechanical component
- Identification and correction of basic machine setup problems in connection with the machine functions
- Machine maintenance
- Orientation in hydraulic diagrams
- Orientation in the drawings of mechanical parts of the machine
- Reading the spare parts catalogue
- MC3F, MC4, MC5 a MC6 control principles in terms of hydraulic functions
- Diagnostic options of the hydraulic system



This training includes both theoretical and practical parts. Training materials are provided for the theoretical part. The KM80/380CX machine is available and used for the practical training at KUBOUŠEK s.r.o. If the training is required directly at the customer, a machine must be available for this purpose.

**Number of trainees:** 5 persons maximum

**Course duration:** 3 days, from 8 am to 4 pm

### Preconditions:

Knowledge is required on the level of the training course KM B1 for the relevant control system.

# Operation and maintenance of PX series KraussMaffei injection molding machine

Control system: MC6  
Level – Basic course

Training course code: **KM B1 - PX**

## Training objective

- Optimum setup and control of the machine including quick and professional troubleshooting of minor problems that may occur during machine operation.

## Topics

- Basic setup and control of the machine
- Identification and correction of minor defects of mechanical and electrical components of the machine
- Identification and correction of basic machine setup problems
- Machine maintenance



This training includes both theoretical and practical parts. Training materials are provided for the theoretical part. The KM161/750PX machine is available and used for the practical training at KUBOUŠEK s.r.o. If the training is required directly at the customer, a machine must be available for this purpose.

**Number of trainees:** 5 persons maximum  
**Course duration:** 3 days, from 8 am to 4 pm

**Preconditions:**  
No special knowledge is required.

# Operation and maintenance of PX series KraussMaffei injection molding machines

Control system: MC6  
Level – Extension course

Training course code: **KM E1 - PX**

## Training objective

- Optimum setup and control of the machine including quick and professional troubleshooting of minor problems that may occur during machine operation.

## Topics

- Basic setup and control of the machine
- Identification and correction of minor defects of mechanical and electrical components of the machine
- Identification and correction of basic problems in the machine setup
- Machine maintenance
- Core setting
- Core programming
- Chart setup
- Quality inspection

This training includes both theoretical and practical parts. Training materials are provided for the theoretical part. The KM161/750PX machine is available and used for the practical training at KUBOUŠEK s.r.o. If the training is required directly at the customer, a machine must be available for this purpose.

**Number of trainees:** 5 persons maximum  
**Course duration:** 2 days, from 8 am to 4 pm

**Preconditions:**  
Knowledge is required on the level of the training course KM B1 for the relevant control system.

# Training course for setters and technologists working on PX series KraussMaffei machines

Control system: MC6  
Level – Special course

Training course code: **KM ST - PX**

## Training objective

- Optimum setup and control of the machine including quick and professional troubleshooting of minor problems that may occur during machine operation.

## Topics

- Basic setup and control of the machine
- Special setup and control of the machine
- Identification and correction of machine setup problems related to the machine functions and technological setup
- Cycle parameter monitoring setup
- SPC
- Standard quality monitoring setup
- Practical setup and use of the graphic packet

This training includes both theoretical and practical parts. Training materials are provided for the theoretical part. The KM161/750PX machine is available and used for the practical training at KUBOUŠEK s.r.o. If the training is required directly at the customer, a machine must be available for this purpose.

**Number of trainees:** 5 persons maximum

**Course duration:** 3 days, from 8 am to 4 pm

**Preconditions:**

Knowledge is required on the level of the training course KM B1 for the relevant control system.



# Basic technological training

Level – Basic course

Training course code: **TECH 1**

## Training objective

- Correct setup of injection molding machines and their process parameters. Identification of causes of molding defects and methods for their correction.

## Topics

- Material training
- Technological machine setup
- Process – influence of technological parameters on the condition and properties of molded parts
- Process optimization – quality inspection, common defects and methods of their correction

This training includes both theoretical and practical parts. Training materials are provided for the theoretical part. The KM80/380CX machine is available and used for the practical training at KUBOUŠEK s.r.o. If the training is required directly at the customer, a machine must be available for this purpose.

**Number of trainees:** 5 persons minimum, 10 maximum

**Course duration:** 2 days, from 8 am to 4 pm

**Preconditions:**

No special knowledge is required.



## KraussMaffei robots

Control system: LRX MC5/MC6  
Level – Basic course

Training course code: **KM B1 LRX**

### Training objective

- Optimum setup and control of the robot including quick and professional troubleshooting of minor problems that may occur during robot operation.

### Topics

- Basic setting and control of the robot
- Localization and elimination of minor defects of mechanical and electrical components of the robot
- Identification and correction of basic problems in the robot programs
- Robot maintenance



This training includes both theoretical and practical parts. Training materials are provided for the theoretical part. A KraussMaffei robot is available for the practical training at KUBOUŠEK s.r.o. If the training is required directly at the customer, a machine must be available for this purpose.

**Number of trainees:** 5 persons maximum  
**Course duration:** 2 days, from 8 am to 4 pm

**Preconditions:**  
No special knowledge is required.

## KraussMaffei robot programming

Control system: LRX MC5/MC6  
Level – Basic course

Training course code: **KM P1 LRX**

### Training objective

- Optimum setup and control of the robot including quick and professional troubleshooting of minor problems that may occur during robot operation.
- Programming using KraussMaffei robot programming language commands

This training includes both theoretical and practical parts. Training materials are provided for the theoretical part. A KraussMaffei robot is available for the practical training at KUBOUŠEK s.r.o. If the training is required directly at the customer, a machine must be available for this purpose.

### Topics

- Basics of programming
- Description and explanation of a simple program
- Description and explanation of programming language commands
- Identification and correction of basic problems in the robot programs
- Development of new programs and sub-programs using the programming language commands
- Editing existing programs

**Number of trainees:** 5 persons maximum  
**Course duration:** 3 days, from 8 am to 4 pm

**Preconditions:**  
Knowledge is required on the level of the training course KM B1 LRX for the relevant control system.

# Operation and maintenance of Sepro robots

Control system: S900II/Visual 1/Visual 2/Visual 3  
Level – Basic course

Training course code: **S B1**

## Training objective

- Optimum setup and control of the robot including quick and professional troubleshooting of minor problems that may occur during robot operation.

## Topics

- Basic setup and control of the robot
- Localization and elimination of minor defects of mechanical and electrical components of the robot
- Identification and correction of basic problems in the robot programs
- Robot maintenance



This training includes both theoretical and practical parts. Training materials are provided for the theoretical part (maximum of five trainees). A Sepro robot is available for the practical training at KUBOUŠEK s.r.o. If the training is required directly at the customer, a machine must be available for this purpose.

**Number of trainees:** 5 persons maximum  
**Course duration:** 2 days, from 8 am to 4 pm

**Preconditions:**  
No special knowledge is required.

# Maintenance of Sepro robots

Control system: S900II/Visual 1/Visual 2/Visual 3  
Level – Special course

Training course code: **S S1**

## Training objective

- Optimum setup and control of the robot including quick and professional troubleshooting of minor problems that may occur during robot operation.

This training includes both theoretical and practical parts. Training materials are provided for the theoretical part (maximum of five trainees). A Sepro robot is available for the practical training at KUBOUŠEK s.r.o. If the training is required directly at the customer, a robot must be available for this purpose.

## Topics

- Setting and control of the robot
- Localization and elimination of defects of mechanical and electrical components of the robot
- Identification and correction of basic problems in the robot programs
- Robot maintenance
- Fixing problems in machine - robot communication
- Basic information on the control system of the robot (control cards)

**Number of trainees:** 5 persons maximum  
**Course duration:** 2 days, from 8 am to 4 pm

**Preconditions:**  
Knowledge is required on the level of the training course S B1 for the relevant control system.

# Operation and maintenance of Sepro 6X robots

Control system: Visual 3  
Level – Basic course

Training course code: **S B1 6X**

## Training objective

- Optimum setup and control of the robot including quick and professional troubleshooting of minor problems that may occur during robot operation.

## Topics

- Basic setup and control of the robot
- Localization and elimination of minor defects of mechanical and electrical components of the robot
- Identification and correction of basic problems in the robot programs
- Robot maintenance

This training includes both theoretical and practical parts. Training materials are provided for the theoretical part (maximum of five trainees). A Sepro robot is available for the practical training at KUBOUŠEK s.r.o. If the training is required directly at the customer, a robot must be available for this purpose.

**Number of trainees:** 5 persons maximum  
**Course duration:** 2 days, from 8 am to 4 pm

**Preconditions:**  
No special knowledge is required.

# Sepro robot programming

Control system: S900II/Visual 1/Visual 2/Visual 3  
Level – Basic course

Training course code: **S P1**

## Training objective

- Optimum setup and control of the robot including quick and professional troubleshooting of minor problems that may occur during robot operation.
- Programming using Sepro logic commands

## Topics

- Basics of programming statements
- Programming using SAP points
- Identification and correction of basic problems in the robot programs
- Development of new programs and subprograms by means of Sepro logic commands



This training includes both theoretical and practical parts. Training materials are provided for the theoretical part (maximum of five trainees). A Sepro robot is available for the practical training at KUBOUŠEK s.r.o. If the training is required directly at the customer, a robot must be available for this purpose.

**Number of trainees:** 5 persons maximum  
**Course duration:** 3 days, from 8 am to 4 pm

**Preconditions:**  
Knowledge is required on the level of the training course S B1 for the S900II control system.



## Sepro robot programming

Control system: S900II/Visual 1/Visual 2/Visual 3  
Level – Advanced course

Training course code: **S P2**

### Training objective

- Optimum setup and control of the robot including quick and professional troubleshooting of minor problems that may occur during robot operation.
- Programming using Sepro logic commands

This training includes both theoretical and practical parts. Training materials are provided for the theoretical part (maximum of five trainees). A Sepro robot is available for the practical training at KUBOUŠEK s.r.o. If the training is required directly at the customer, a robot must be available for this purpose.

### Topics

- Development of programs by means of “Simple programming”
- Development of programs from EPS programs
- Identification and correction of basic problems in the robot programs
- Development of new programs and subprograms using Sepro logic commands
- Development of PLC programs
- Setup of robot special functions
- Development of palletizing programs

**Number of trainees:** 5 persons maximum

**Course duration:** 3 days, from 8 am to 4 pm

#### Preconditions:

Knowledge is required on the level of the training course S P1 for the S900II control system.

## Individual training course

Level – Optional

Training course code: **IN 1**

### Training objective

- According to customer requirements.

### Topics

- Various types and levels of training can be combined as agreed with the customer.



This training includes both theoretical and practical parts. Training materials are provided for the theoretical part. The KM80/380CX machine and Sepro robots are available and used for the practical training at KUBOUŠEK s.r.o. If the training is required directly at the customer, a machine or robot must be available for this purpose.

**Number of trainees:** 5 persons maximum

**Course duration:** 1 – 5 days as agreed, from 8 am to 4 pm.

#### Preconditions:

No special knowledge is required.

# Operation and maintenance of KOCH-Technik peripheral equipment

Intended for equipment: Drying, dosing and vacuum conveying of plastic granulate  
Level – Basic course

## Scope A: Plastic granulate drying

Training course code: **KOCH SPG 1**

### Training objective

- Basic principles of plastic granulate drying, setup and control of the dryer including correction of minor defects that may occur during operation.

### Topics

- Basic principles of granulate drying
- Specifics for individual types of dryers
- Control of dryers and basic parameter setup
- Identification and correction of defects on the equipment
- Basic maintenance of the dryer
- Inspection activities and their frequency



This training includes both theoretical and practical parts. Training materials are provided for the theoretical part. Practical training takes place at the customer's plant on a specific equipment.

**Number of trainees:** 5 persons maximum

**Course duration:** 2 hours

**Preconditions:**

No special knowledge is required.

## Scope B: Vacuum conveying of plastic granulate

Training course code: **KOCH PDG 1**

### Training objective

- Basic principle of vacuum conveying and of individual parts of the system, system setup and control including correction of minor defects that may occur during operation.

### Topics

- Basic principle of vacuum conveying
- Specifics of individual parts of the system
- Basic setup and operation of KOCH-Technik SPS control
- Identification and correction of minor defects of vacuum conveying system
- Basic maintenance of vacuum conveying system
- Maintenance of vacuum pumps
- Inspection activities and their frequency

This training includes both theoretical and practical parts. Training materials are provided for the theoretical part. Practical training takes place at the customer's plant on a specific equipment.

**Number of trainees:** 5 persons maximum

**Course duration:** 2 hours

**Preconditions:**

No special knowledge is required.

## Scope C: Volumetric dosing system

Training course code: **KOCH VDG 1**

### Training objective

- Basic principles of volumetric dosing, setup and control of the equipment including correction of minor defects that may occur during operation.

### Topics

- Basic volumetric dosing principle
- Specifics of individual types of dosing stations
- Setup and control of the KOCH-Technik control unit MCm 4/SL 31/SL 42
- Identification and correction of minor defects of dosing
- Basic maintenance of dosing equipment
- Inspection activities and their frequency



This training includes both theoretical and practical parts. Training materials are provided for the theoretical part. Practical training takes place at the customer's plant on a specific equipment.

**Number of trainees:** 5 persons maximum

**Course duration:** 2 hours

**Preconditions:**

No special knowledge is required.

## Scope D: Gravimetric dosing system

Training course code: **KOCH GDG 1**

### Training objective

- Basic principles of gravimetric dosing, setup and control of the equipment including correction of minor defects that may occur during operation.

### Topics

- Basic gravimetric dosing principle
- Specifics of individual parts of the dosing system
- Setup and control of the KOCH-Technik control unit MCm-G/MCm-G Touch
- Identification and correction of minor defects of dosing
- Maintenance of dosing equipment
- Inspection activities and their frequency

This training includes both theoretical and practical parts. Training materials are provided for the theoretical part. Practical training takes place at the customer's plant on a specific equipment.

**Number of trainees:** 5 persons maximum

**Course duration:** 2 hours

**Preconditions:**

No special knowledge is required.

Individual scopes can be combined according to customer's needs.

# Training course for setters and technologists working on KOCH-Technik peripheral equipment

Intended for equipment: Drying, dosing and vacuum conveying of plastic granulate  
Level – Advanced course

## Scope A: Plastic granulate drying

Training course code: **KOCH SPG 2**

### Training objective

- Principles of plastic granulate drying, drying parameter setup and control of the dryer including correction of defects that may occur during operation.

### Topics

- Principles of (hot air, compressed air, dry air) drying
- Specifics for individual types of dryers
- Control of dryers and parameter setup
- Drying parameter optimization
- Identification and correction of defects on the equipment
- Dryer maintenance
- Inspection activities and their frequency

This training includes both theoretical and practical parts. Training materials are provided for the theoretical part. Practical training takes place at the customer's plant or in the KUBOUŠEK Technology Center.

**Number of trainees:** 5 persons maximum

**Course duration:** 4 hours

**Preconditions:**

Knowledge of basic manipulation with the equipment.

## Scope B: Vacuum conveying of plastic granulate

Training course code: **KOCH PDG 2**

### Training objective

- Principles of vacuum conveying and of individual parts of the system, system setup and control including correction of minor defects that may occur during operation.

### Topics

- Vacuum conveying principle
- Specifics of individual parts of the system
- Setup and operation of KOCH-Technik SPS control
- Vacuum conveying optimization
- Identification and correction of minor defects of vacuum conveying system
- Vacuum conveying system maintenance
- Maintenance of vacuum pumps
- Inspection activities and their frequency

This training includes both theoretical and practical parts. Training materials are provided for the theoretical part. Practical training takes place at the customer's plant or in the KUBOUŠEK Technology Center.

**Number of trainees:** 5 persons maximum

**Course duration:** 4 hours

**Preconditions:**

Knowledge of basic manipulation with the equipment.

## Scope C: Volumetric dosing system

Training course code: **KOCH VDG 2**

### Training objective

- Principles of volumetric dosing, setup and control of the equipment including correction of minor defects that may occur during operation.

### Topics

- Volumetric dosing principle
- Specifics of individual types of dosing stations
- Setup and control of the KOCH-Technik control unit MCm 4/SL 31/SL 42
- Optimization of volumetric dosing process
- Identification and correction of dosing defects
- Maintenance of dosing equipment
- Inspection activities and their frequency

This training includes both theoretical and practical parts. Training materials are provided for the theoretical part. Practical training takes place at the customer's plant or in the KUBOUŠEK Technology Center.

**Number of trainees:** 5 persons maximum

**Course duration:** 4 hours

**Preconditions:**

Knowledge of basic manipulation with the equipment.

## Scope D: Gravimetric dosing system

Training course code: **KOCH GDG 2**

### Training objective

- Principles of gravimetric dosing, setup and control of the equipment including correction of minor defects that may occur during operation.

### Topics

- Gravimetric dosing principle
- Specifics of individual parts of the dosing system
- Setup and control of the KOCH-Technik control unit MCm-G/MCm-G Touch
- Optimization of gravimetric dosing process
- Identification and correction of dosing defects
- Maintenance of dosing equipment
- Inspection activities and their frequency



This training includes both theoretical and practical parts. Training materials are provided for the theoretical part. Practical training takes place at the customer's plant or in the KUBOUŠEK Technology Center.

**Number of trainees:** 5 persons maximum

**Course duration:** 4 hours

**Preconditions:**

Knowledge of basic manipulation with the equipment.

Individual scopes can be combined according to customer's needs.

## Operation and maintenance of REGLOPLAS peripheral equipment

Intended for equipment: Temperature control units  
Level – Basic course

Training course code: **RGP 1**

### Training objective

- Basic principles of temperature control, setup and control of the machine incl. correction of minor defects that occur during operation.

### Topics

- Basic temperature control principles
- Specifics for individual types of temperature control units
- Configuration and control of equipment parameters
- Setup and operation of the RT100/RT70 control unit
- Identification and correction of minor mechanical and electronic defects on the equipment
- Equipment maintenance
- Inspection



This training includes both theoretical and practical parts. Training materials are provided for the theoretical part. Practical training is carried on previously agreed equipment at KUBOŮŠEK s.r.o. If the training is required directly at the customer, a machine must be available for this purpose.

**Number of trainees:** 5 persons maximum

**Course duration:** 1 day, from 8 am to 4 pm

**Preconditions:**

Common knowledge in maintenance, knowledge in electrical field.

## Operation and maintenance of pulse temperature control system – ONI RHYTEMPER

Intended for equipment: Pulse temperature control system  
Level – Special course

Training course code: **ONI RHY 1**

### Training objective

- Temperature control process optimization with the full use of the ONI - Rhytemper technology potential, cycle time saving with preservation of the resulting product quality.

### Topics

- Basic principles of the optimization process
- Pulse temperature control system functioning
- Detailed configuration and control of the system
- Use of thermographic camera

This training includes both theoretical and practical parts. Training materials are provided for the theoretical part. Practical training takes place at the customer's plant.

**Number of trainees:** 10 persons maximum

**Course duration:** 2 days, from 8 am to 4 pm

**Preconditions:**

Knowledge of basic manipulation with the equipment.



# Operation and maintenance of SESOTEC peripheral equipment

Intended for equipment: Detectors and separators of metal particles  
Level – Basic course

Training course code: **SES 1**

## Training objective

- Basic principles of the detection, machine setup and control including correction of minor defects that may occur during operation.

## Topics

- Basic detection principles
- Specifics for individual types of detectors
- Detection and detector sensitivity setup
- Identification and correction of minor defects on the equipment
- Equipment maintenance and operation
- Inspection



This training includes both theoretical and practical parts. Training materials are provided for the theoretical part. Practical training is carried on previously agreed equipment at KUBOUŠEK s.r.o. If the training is required directly at the customer, a machine must be available for this purpose.

**Number of trainees:** 5 persons maximum

**Course duration:** 1 day, from 8 am to 4 pm

**Preconditions:**

Knowledge of basic manipulation with the equipment.

# Operation of Mitutoyo CMMs - SW MCOSMOS - Basic

Control system: SW MCOSMOS  
Level – Basic course (GEOPAK)

Training course code: **MT 1**

## Training objective

- Optimum control of SW PartManager – basic orientation in the menu, including CMM configuration, programming, copying and editing of created parts.

## Topics

### 1. GEOPAK:

- User calibration – qualification of the probe systems of sets and contacts
- Definition of part and machine coordinate system
- Creation of elements in the manual and CNC mode
- Evaluation of elements and their relations
- Evaluation of geometric quantities
- Configuration of issue of protocols and polar charts

### 2. Protocol Designer:

- Basic editing of graphic protocol

The training course includes a theoretical part providing necessary information, and a practical part, where the operator applies his/her knowledge in practice. The course may take place at the customer as well as in our Education Center.

**Number of trainees:** 8 persons maximum

**Course duration:** 2 days, from 8 am to 4 pm

**Preconditions:**

Basic use of PC, basic knowledge in the field of metrology.



# Operation of Mitutoyo CMMs - SW option MCOSMOS - CAT 1000 P/S

Control system: SW MCOSMOS – CAT 1000 P/S  
Level – Basic course for work with models

Training course code: **MT 2**

## Training objective

- Optimum control of the extension for SW MCOSMOS – CAT 1000 P/S. Programming using a model in the CAT1000 option. Programming, copying, interconnection with GEOPAK and editing of created parts.

## Topics

- Training in CAT1000P module – part programming using a model and its geometric elements, issue of graphic protocol
- Training in CAT1000S module – programming and comparison of model points by comparison with a real part, issue of graphic protocol
- CAT1000P/S combination

The training course includes a theoretical part providing necessary information, and a practical part, where the operator applies his/her knowledge in practice. The course may take place at the customer as well as in our Education Center.

**Number of trainees:** 8 persons maximum

**Course duration:** 1 day/module, from 8 am to 4 pm

**Preconditions:**

Knowledge is required on the level of the MT1 course.



## SW MCOSMOS – Advanced course

Control system: SW MCOSMOS – Advanced  
Level – Advanced

Training course code: **MT 3**

### Training objective

- Advanced programming.

### Topics

Advanced programming related to MT1 and MT2

1. MCOSMOS training - Advanced (GEOPAK):

- Work with variables
- Advanced programming of protocols – Protocol Designer

The training course includes a theoretical part providing necessary information, and a practical part, where the operator applies his/her knowledge in practice. The course may take place at the customer as well as in our Education Center.

**Number of trainees:** 8 persons maximum

**Course duration:** 11 day, from 8 am to 4 pm

**Preconditions:**

Knowledge is required on the level of the MT2 course.



## Operation of Mitutoyo CMMs - SW MSURF – non-contact line laser

Control system: SW MSURF  
Level – Comprehensive training

Training course code: **MT 4**

### Training objective

- Optimum control of SW MSURF – basic orientation in the menu, including CMM configuration, programming, copying and editing of created parts.

### Topics

1. MSURF:

- User calibration – qualification of the probe systems – non-contact line laser
- Definition of part and machine coordinate system
- Creation of elements
- Evaluation of elements and their relations
- Evaluation of geometric quantities
- Configuration of issue of protocols

2. MSURF

- Programming and comparison of the measured part with the model (3D)

The training course includes a theoretical part providing necessary information, and a practical part, where the operator applies his/her knowledge in practice. The course may take place at the customer as well as in our Education Center.

**Number of trainees:** 8 persons maximum

**Course duration:** 3 days, from 8 am to 4 pm

**Preconditions:**

Basic use of PC, basic knowledge in the field of metrology.

# Operation of Mitutoyo CMMs - SW option GEARPAK - Geared wheels

Control system: SW GEARPAK  
Level – Comprehensive training

Training course code: **MT 5**

## Training objective

- Optimum control of SW GEARPAK – basic orientation in the menu, including SW configuration, programming, copying and editing of created parts.

## Topics

### 1. GEARPAK:

- Setup of GEARPAK SW option
- Definition of part and machine coordinate system
- Creation of elements in the CNC mode
- Evaluation of elements and their relations
- Evaluation of geometric quantities
- Configuration of issue of protocols

The training course includes a theoretical part providing necessary information, and a practical part, where the operator applies his/her knowledge in practice. The course may take place at the customer as well as in our Education Center.

**Number of trainees:** 8 persons maximum  
**Course duration:** 3 days, from 8 am to 4 pm

**Preconditions:**  
Basic use of PC, basic knowledge in the field of metrology.

# Operation of Mitutoyo machines - contour measuring instrument - SW FORMTRACEPAK

Control system: SW FORMTRACEPAK  
Level – Comprehensive training

Training course code: **MT 6**

## Training objective

- Optimum control of SW FORMTRACEPAK – basic orientation in the menu, including contour measuring instrument configuration, programming, copying and editing of created parts.

## Topics

### 1. FORMTRACEPAK:

- User calibration – qualification of the probe systems of contacts
- Definition of part and machine coordinate system
- Creation of elements in the manual and CNC mode
- Evaluation of elements and their relations
- Evaluation of geometric quantities
- Configuration of issue of protocols

The training course includes a theoretical part providing necessary information, and a practical part, where the operator applies his/her knowledge in practice. The course may take place at the customer as well as in our Education Center.

**Number of trainees:** 8 persons maximum  
**Course duration:** 2 days, from 8 am to 4 pm

**Preconditions:**  
Basic use of PC, basic knowledge in the field of metrology

# Operation of Mitutoyo machines - contour measuring inst. combined with roughness measuring instr.- SW FORMTRACEPAK

Control system: SW FORMTRACEPAK  
Level – Comprehensive training

Training course code: **MT 7**

## Training objective

- Optimum control of SW FORMTRACEPAK – basic orientation in the menu, including configuration of contour measuring instrument combined with roughness measuring instrument, programming, copying and editing of created parts.

## Topics

### 1. FORMTRACEPAK:

- User calibration – qualification of the probe systems of contacts of contour and roughness measuring instrument
- Definition of part and machine coordinate system
- Creation of elements in the manual and CNC mode
- Evaluation of elements and their relations
- Evaluation of geometric quantities
- Configuration of roughness measuring instrument, setup of standards and standard parameters
- Configuration of issue of protocols

The training course includes a theoretical part providing necessary information, and a practical part, where the operator applies his/her knowledge in practice. The course may take place at the customer as well as in our Education Center.

**Number of trainees:** 8 persons maximum

**Course duration:** 3 days, from 8 am to 4 pm.

### Preconditions:

Basic use of PC, basic knowledge in the field of metrology, knowledge of roughness standards and parameters.



# Mitutoyo roughness measuring instrument

## – SJ 2xx, 3xx, 4xx – workshop

Control system: instrument interface - built-in processor  
Level – Comprehensive training

Training course code: **MT 8**

### Training objective

- Optimum control of the processor – basic orientation in the menu, including configuration of the roughness measuring instruments, measurement and evaluation.



### Topics

1. Built-in data processor:
  - Instrument setup
  - User calibration – qualification of the probe systems
  - Setup of standards and parameters of the instrument
  - Evaluation and print

The training course includes a theoretical part providing necessary information, and a practical part, where the operator applies his/her knowledge in practice. The course may take place at the customer as well as in our Education Center.

**Number of trainees:** 8 persons maximum

**Course duration:** 1 day, from 8 am to 4 pm

**Preconditions:**

Knowledge of parameters and standards, basic knowledge in the field of metrology.

# Operation of Mitutoyo machines - roughness measuring instrument SJ 2xxx,5xxx- SW SURFPAK - laboratory

Control system: SW SURFPAK  
Level – Comprehensive training

Training course code: **MT 9**

### Training objective

- Optimum control of SW SURFPAK – basic orientation in the menu, including laboratory roughness measuring instrument configuration, programming, copying and editing of created parts.

### Topics

1. SURFPAK
  - Instrument setup
  - User calibration – qualification of the probe systems of contacts of the roughness measuring instrument
  - Setup of standards and parameters of the instrument
  - Evaluation and print

The training course includes a theoretical part providing necessary information, and a practical part, where the operator applies his/her knowledge in practice. The course may take place at the customer as well as in our Education Center.

**Number of trainees:** 8 persons maximum

**Course duration:** 1 day per module, from 8 am to 4 pm

**Preconditions:**

Basic use of PC, basic knowledge in the field of metrology, knowledge of roughness standards and parameters.

# Operation of Mitutoyo machines – roundness measuring instruments - SW ROUNDPAK – workshop and laboratory

Control system: SW ROUNDPAK  
Úroveň – Comprehensive training

Training course code: **MT 10**

## Training objective

- Optimum control of SW ROUNDPAK – basic orientation in the menu, including roundness measuring instrument configuration, programming, copying and editing of created parts.

## Topics

### 1. ROUNDPAK:

- User calibration – qualification of the probe systems of sets and contacts
- Definition of part and machine coordinate system
- Creation of elements in the manual and CNC mode
- Evaluation of elements and their relations
- Evaluation of geometric quantities
- Configuration of issue of protocols and polar charts

The training course includes a theoretical part providing necessary information, and a practical part, where the operator applies his/her knowledge in practice. The course may take place at the customer as well as in our Education Center.

**Number of trainees:** 8 persons maximum

**Course duration:** 2 days, from 8 am to 4 pm

**Preconditions:**

Basic use of PC, basic knowledge in the field of metrology

# Operation of Mitutoyo machines – QUICKSCOPE - SW QSPAK – manual and CNC – 2D

Control system: SW QSPAK  
Level - Comprehensive training

Training course code: **MT 11**

## Training objective

- Optimum control of SW QSPAK – basic orientation in the menu, including configuration of QS series instruments, programming, copying and editing of created parts.

## Topics

### 1. QSPAK:

- Definition of part and machine coordinate system
- Creation of elements in the manual and CNC mode
- Evaluation of elements and their relations
- Evaluation of geometric quantities
- Configuration of issue of protocols

The training course includes a theoretical part providing necessary information, and a practical part, where the operator applies his/her knowledge in practice. The course may take place at the customer as well as in our Education Center.

**Number of trainees:** 8 persons maximum  
**Course duration:** 2 days, from 8 am to 4 pm

**Preconditions:**  
Basic use of PC, basic knowledge in the field of metrology

# Operation of Mitutoyo machines – QUICKVISION - SW QVPAK – 3D

Control system: SW QVPAK  
Level – Comprehensive training

Training course code: **MT 12**

## Training objective

- Optimum control of SW QVPAK – basic orientation in the menu, including configuration of QS series instruments, programming, copying and editing of created parts.

## Topics

### 1. QVPAK:

- Definition of part and machine coordinate system
- Creation of elements in the manual and CNC mode
- Evaluation of elements and their relations
- Evaluation of geometric quantities
- Configuration of issue of protocols

The training course includes a theoretical part providing necessary information, and a practical part, where the operator applies his/her knowledge in practice. The course may take place at the customer as well as in our Education Center.

**Number of trainees:** 8 persons maximum  
**Course duration:** 2 days, from 8 am to 4 pm

**Preconditions:**  
Basic use of PC, basic knowledge in the field of metrology

# Operation of MTL VICIVISION machines - SW MTL

Control system: SW MTL  
Level – Comprehensive training

Training course code: **MT 13**

## Training objective

- Optimum control of SW MTL – basic orientation in the menu, programming, copying and editing of created parts.

## Topics

1. MTL static measurement:

- Definition of part and machine coordinate system
- Creation of static elements
- Evaluation of static elements and their relations
- Evaluation of static geometric quantities
- Configuration of issue of protocols

2. MTL dynamic measurement:

- Basic editing of graphic protocol
- Creation of dynamic elements
- Evaluation of dynamic elements and their relations
- Evaluation of dynamic geometric quantities
- Configuration of issue of protocols and polar charts

3. DXF comparison of measured part with 2D model

The training course includes a theoretical part providing necessary information, and a practical part, where the operator applies his/her knowledge in practice. The course may take place at the customer as well as in our Education Center.

**Number of trainees:** 8 persons maximum

**Course duration:** 2 days, from 8 am to 4 pm

**Preconditions:**

Basic use of PC, basic knowledge in the field of metrology



# Operation of METRIOS machines - METRIOS

Control system: SW METRIOS  
Level – Comprehensive training

Training course code: **MT 14**

## Training objective

- Optimum control of SW METRIOS – basic orientation in the menu, programming, copying and editing of created parts.

## Topics

1. METRIOS measurement:

- Definition of part and machine coordinate system
- Creation of elements
- Evaluation of elements and their relations
- Evaluation of geometric quantities
- Geared wheels
- Configuration of issue of protocols

2. DXF comparison of measured part with 2D model and issue of DXF contour (reverse engineering)

The training course includes a theoretical part providing necessary information, and a practical part, where the operator applies his/her knowledge in practice. The course may take place at the customer as well as in our Education Center.

**Number of trainees:** 8 persons maximum

**Course duration:** 2 days, from 8 am to 4 pm

**Preconditions:**

Basic use of PC, basic knowledge in the field of metrology





# Fundamentals of metrology

Level – Basic course

Training course code: **MET 01**

## Training objective

- Introduction to the past and the present, and to the legislation in the area of metrology.

## Topics

- The history and the present of metrology, its importance
- Organization and legislation of metrology in the Czech Republic
- SI units and basic physical constants
- Metrology in general – basic terms, terminology
- Measuring instruments division from the viewpoint of metrology – verification and calibration
- Fundamentals of metrological practice in the factory – organization, documentation, recording, marking

The training course is intended for persons who have no previous knowledge in the field of metrology. The trainees receive training materials for relevant topics.

**Number of trainees:** approx. 8

**Course duration:** 6 hours

**Preconditions:**

No previous knowledge is required.

# Metrology in practice

Level – Superstructural course

Training course code: **MET 02**

## Training objective

- Application of metrology fundamentals in practice

## Topics

- Measuring gauges and instruments for measurement of length and plane angle
- Temperature measurement
- Pressure measurement
- The basics of statistical data processing
- Measurement methods and procedures
- Measuring instrument calibration principles
- Metrological order
- Demonstration of selected measuring instruments and of work with them

The training course is intended for the metrological personnel who already have previous theoretical and practical experience in the field. It consists of a theoretical part and practical demonstration on selected measuring instruments. The trainees receive training materials for relevant topics.

**Number of trainees:** approx. 8

**Course duration:** 8 hours

**Preconditions:**

Basic knowledge in the field of metrology.

# Introduction to quality management

---

Level – Basic course

Training course code: **QM 01**

## Training objective

- Familiarization with QMS principles

## Topics

- Quality management principles
- Risk management principles
- How to define risks and opportunities

The training course is intended for personnel who already work in the field of quality, possible for beginners who are preparing for work in the field. The trainees receive training materials for relevant topics.

**Number of trainees:** 5 to 8 persons

**Course duration:** 4 hours

**Preconditions:**

No previous knowledge is required.

# Quality management (ISO 9001:2016)

---

Level – Extension course

Training course code: **QM 02**

## Training objective

- Familiarization with the requirements of new ISO 9001:2016

## Topics

- Explanation of new concept of the standard
- Explanation of terms
- Comparison of requirements of the previous and current version of ISO 9001
- Explanation of new requirements of the standard

The training course is intended in particular for the personnel who already work in the field of quality and know the basics of ISO 9001. In particular, it is suitable for those who need to extend their knowledge of ISO 9001. The trainees receive training materials for relevant topics.

**Number of trainees:** 5 to 8 persons

**Course duration:** 8 hours (1 day)

**Preconditions:**

Basic knowledge in the field (terminology, principles).

## The team of the Education Center



In addition to the offer of training courses from the catalogue, the Education Center offers a wide range of **lectures and courses** led by leading professionals in their field.

For current offer, visit [www.kubousek.cz](http://www.kubousek.cz).

### Applications for training courses



KUBOUŠEK s.r.o.  
Lidická tř. 1937  
370 07 České Budějovice  
Czech Republic



EC@kubousek.cz



+420 389 046 152



+420 386 351 819



[www.kubousek.cz](http://www.kubousek.cz)



**KUBOUSEK<sup>®</sup>**  
 TECHNOLOGIES AND INSTRUMENTS

[www.kubousek.com](http://www.kubousek.com)